



www.stgdesign.com  
© STG Design, Inc. All Rights Reserved

STG Design, Inc.  
828 West 6th Street  
Suite 300  
Austin, TX 78703  
512.899.3500

1401 SOUTH LAMAR  
MULTIFAMILY AND  
GARAGE  
AUSTIN, TEXAS 78704

These documents may not be reproduced in  
any form without the written consent of  
STG Design, Inc.

This sheet is only one component of the total  
document package which consists of all  
sheets of drawings and the project manual.



SITE PLAN RELEASE	
FILE NUMBER: SP-2020-0169C	EXPIRATION DATE: 04/17/2020
CASE MANAGER: RANDY ROUDA	APPLICATION DATE: 04/17/2020
APPROVED ADMINISTRATIVELY ON:	
APPROVED BY PLANNING COMMISSION ON:	
APPROVED BY CITY COUNCIL ON:	
under Section 112 of Chapter 25-5 of the Austin City Code.	
Director for Development Services Department	
DATE OF RELEASE:	Zoning: CS-MU-V-CO, CS-V, CS-CO & CS-VO-CO
Rev. No. 1	Correction No.1
Rev. No. 2	Correction No.2
Rev. No. 3	

RELEASE OF THIS APPLICATION DOES NOT CONSTITUTE A VERIFICATION  
OF ALL DATA, INFORMATION AND CALCULATIONS SUPPLIED BY THE  
APPLICANT. THE ENGINEER OF RECORD IS SOLELY RESPONSIBLE FOR THE  
COMPLETENESS, ACCURACY AND ADEQUACY OF HIS/HER SUBMITTAL,  
WHETHER OF NOT THE APPLICATION IS REVIEWED FOR CODE  
COMPLIANCE BY CITY ENGINEERS.

Issues

Project Number: 12.18836.00

Project Director: JT

Quality Assurance: Checker

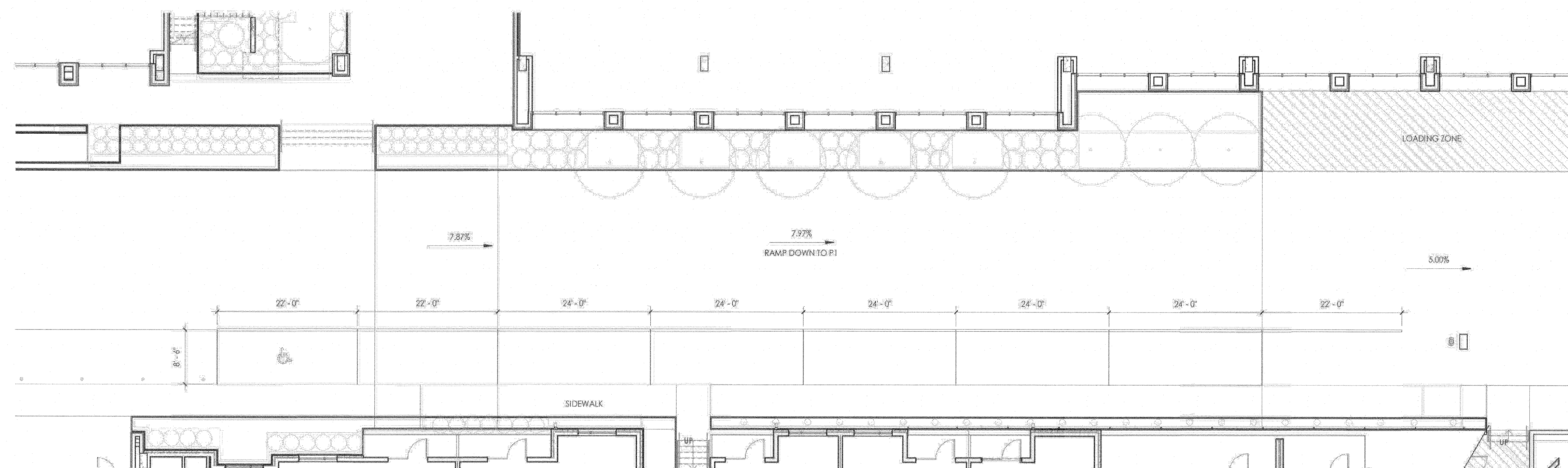
Drawn By: Author

RAMP AND TRASH

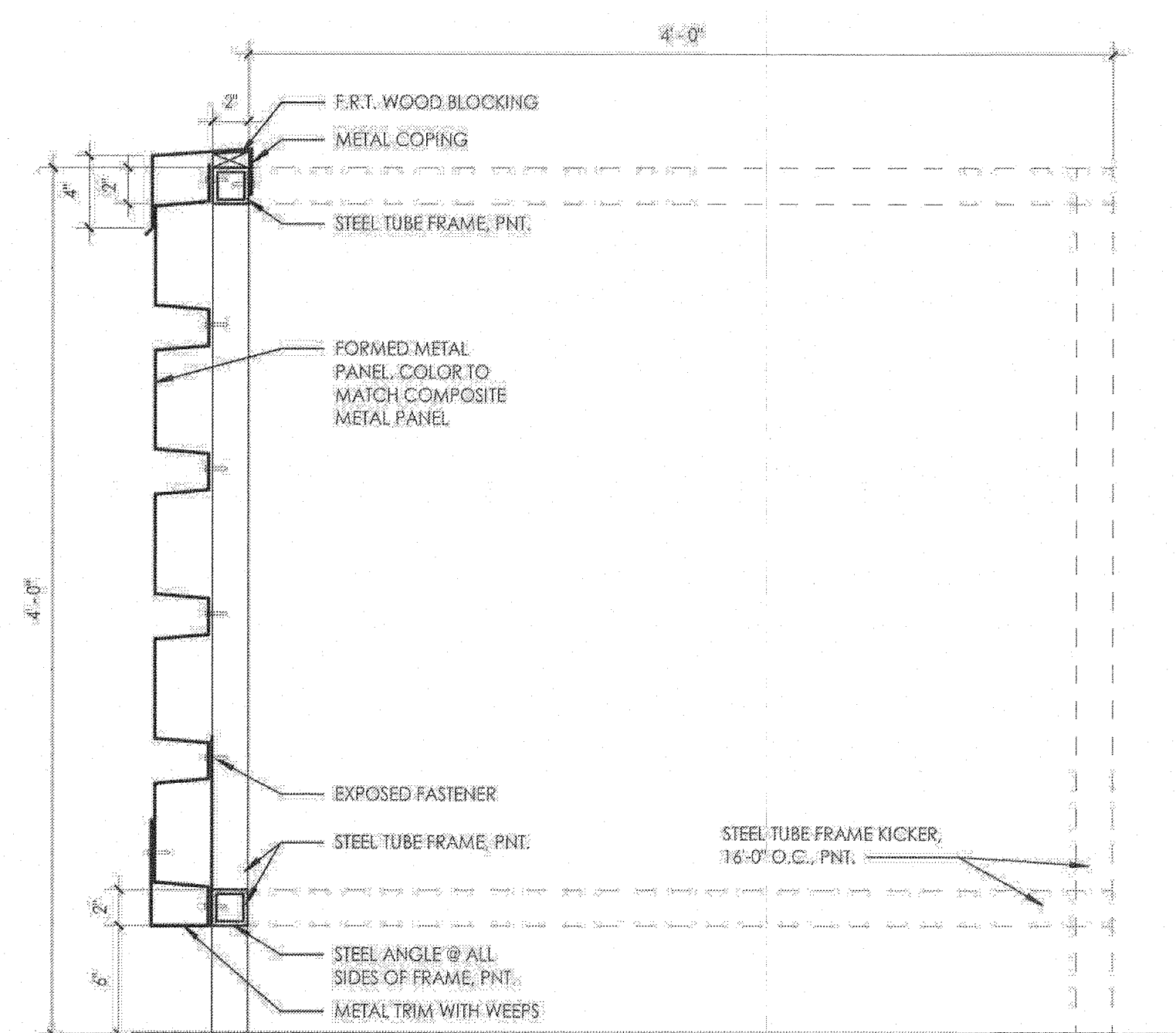
AR 10

55  
OF 58

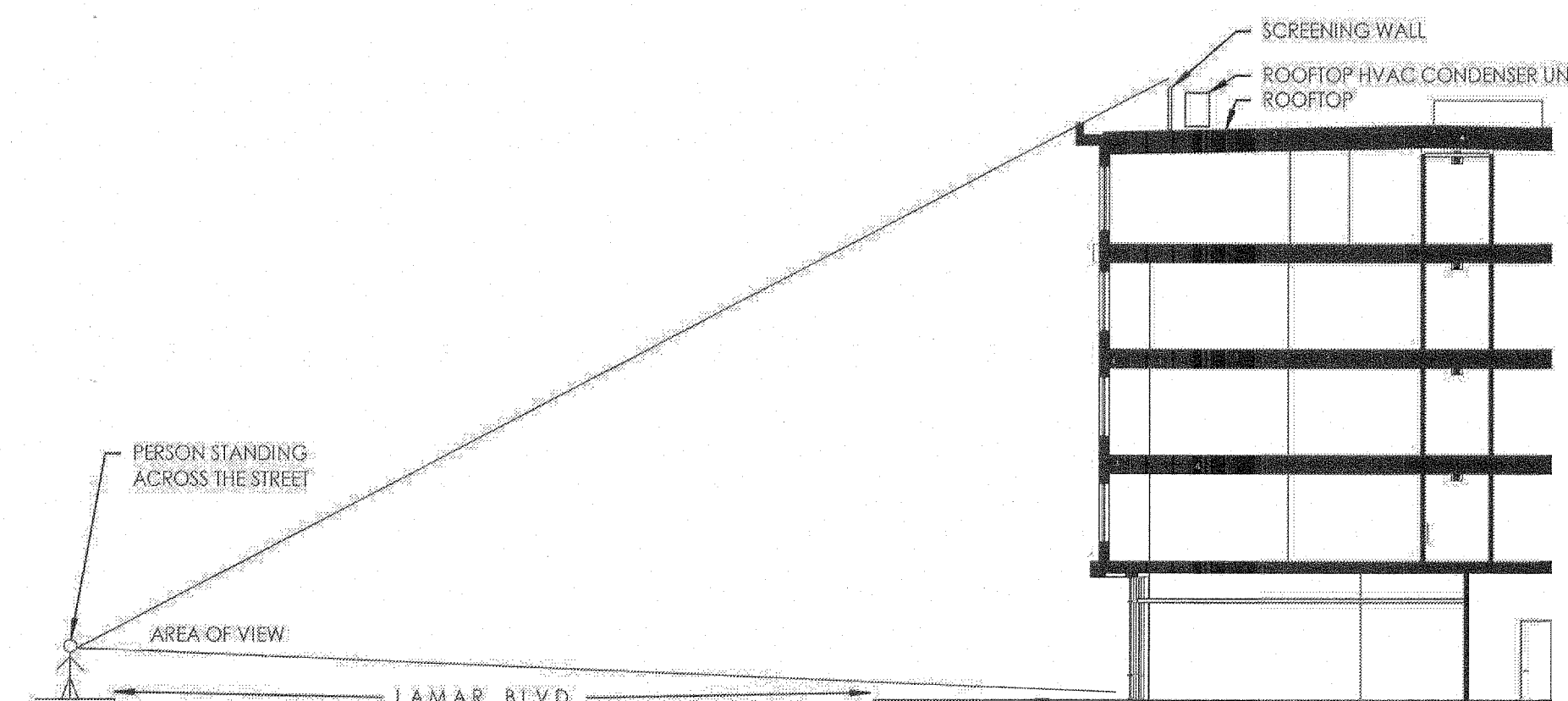
SP-2020-0169C



**F1** PARALLEL PARKING  
1" = 10'-0"



**A1** SECTION DETAIL - ROOFTOP MECH SCREEN  
1 1/2" = 1'-0"



**A6** SCREENING SECTION DIAGRAM  
1/16" = 1'-0"

Scale: 1/8" = 1'-0" (Vertical) 1/4" = 1'-0" (Horizontal)  
1/8" = 1'-0" (Vertical) 1/4" = 1'-0" (Horizontal)

10/20/2019 10:20:23 PM